

Train of Thought (Derailed)

for amplified oboe / English horn
and tape

For the Greater Denton Arts Council
and Victoria Eastman

Program Notes:

Train of Thought (Derailed) establishes metaphors between the timbre and sound worlds of the oboe and english horn and the sound world of the trains passing through Denton, Texas. Pitched materials are largely influenced by the common intervals of American train horns. Just as trains are transitory in nature, the piece's form and musical materials are passed between the instrument and the tape parts and between the two different instruments. *Train of Thought (Derailed)* is dedicated to the Greater Denton Arts Council and oboist Victoria Eastman.

Technical Notes:

Prior to performance, the oboist should remove both the bocal and the bell of the English horn.

A basic setup for amplification of the oboe/ english horn part can be done with a single microphone and a set of two speakers. It is also acceptable to diffuse the stereo audio out of more than two speakers. The amplification effect should sound subtle and should equal the volume of the tape part.

Train of Thought (Derailed)

for amplified oboe / English horn
and tape

For the Greater Denton Arts Council
and Victoria Eastman

10"

Free
♩ = 60

Oboe

niente < *f* > *mp* *mf* *f* *mp*

Tape

(approximate pitch)

pp *cresc. poco a poco*

ca. 31"

7

Ob.

mf 5:4 *f*

Tape

7

Train of Thought (Derailed)

ca. 41"

Ob. 9

mf 5:4

mp

mf

train horn

Tape 9

(sustaining through the system)

f

ca. 54"

Ob. 13

f

pp

Tape 13

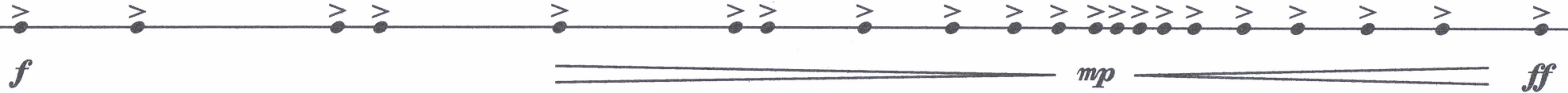
pp

18"

1' 15"

slap larger end of removed
English horn bell with handplace bell back on
English horn
(w/ bocal removed)

Ob.



17

Tape

(oboe slap
processed sounds)

17

45"

1' 32"

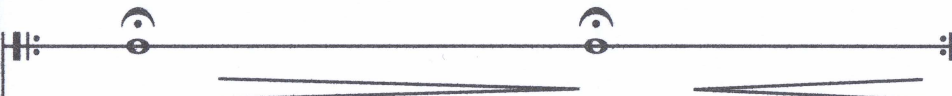
Slow and Meditative

exhale through
top of English horninhale through
top of English horn

remove bocal of oboe

Ob.

18



Tape

(breath noise)

(filter frequency
resonance)

(stretched multiphonic) (train horn * breath noi

18

Train of Thought (Derailed)

1' 10"

Ob. 2' 17" 19 exhale through top of oboe inhale through top of oboe remove bell slap larger end of of oboe oboe bell with hand

Tape 19 (granular bell slaps) (filter frequency resonance) (stretched multiphonic) (train track noise)

p *mf* *f* *mp*

20"

Ob. 3' 27" 20 Morse Code blow through the removed English horn bocal place english horn bocal in english horn

Tape 20 train horn (approximate texture) (trills)

mp cresc. poco a poco

Train of Thought (Derailed)

4' 07" Free

English horn
(sounding P5 lower)

Ob. 22

p *mp* *mf*

Tape 22 (trills continue)
(approximate texture)

mf

4' 43"

Ob. 28

f *mf* *mp* *pp*

Tape 28

niente